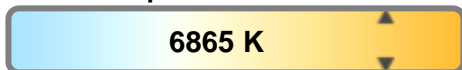


Color Temperature:



Total Lumen Output:
5131 lm

Light Quality:

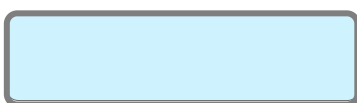


Peak:
179025 cd

Light Efficiency:



Power: 421 W



CIE 1931
x: 0.309
y: 0.317

Test: Wash Zoom Out

Date: 7/27/2018

Voltage: 116 V

Current: 3.63 A

Frequency: 60 Hz

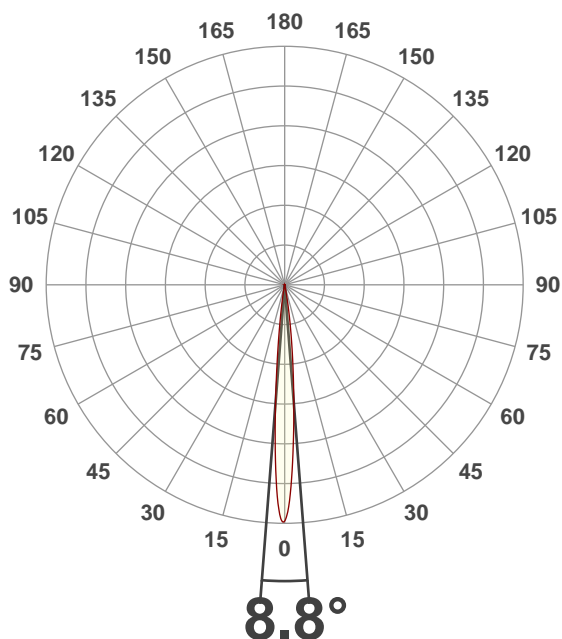
CRI: 75.5

CQS: 71.2

TM30: 75.0

Note:

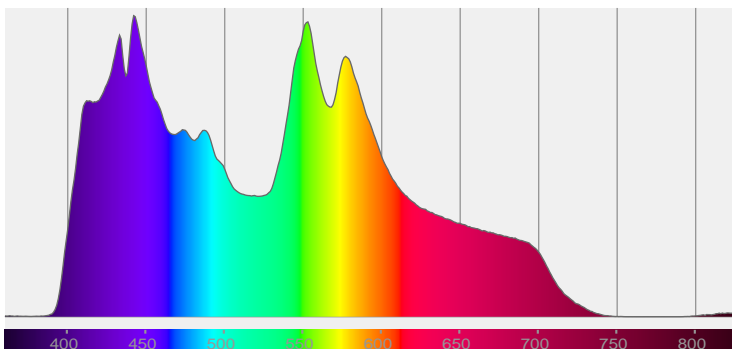
Beam Angle



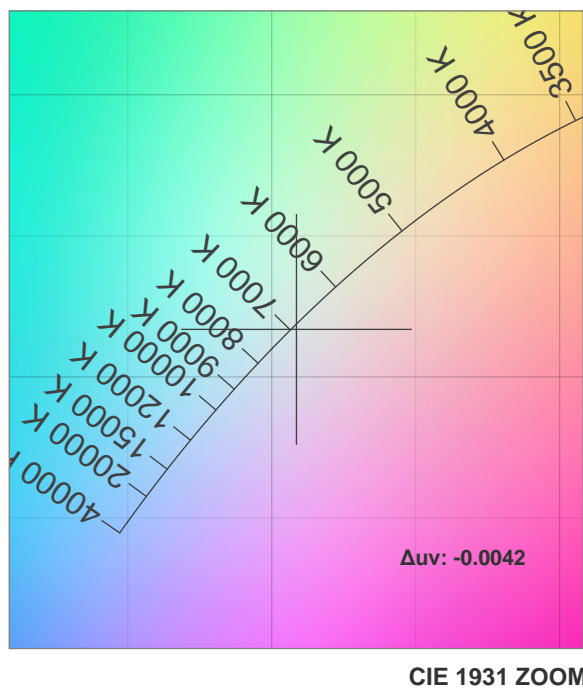
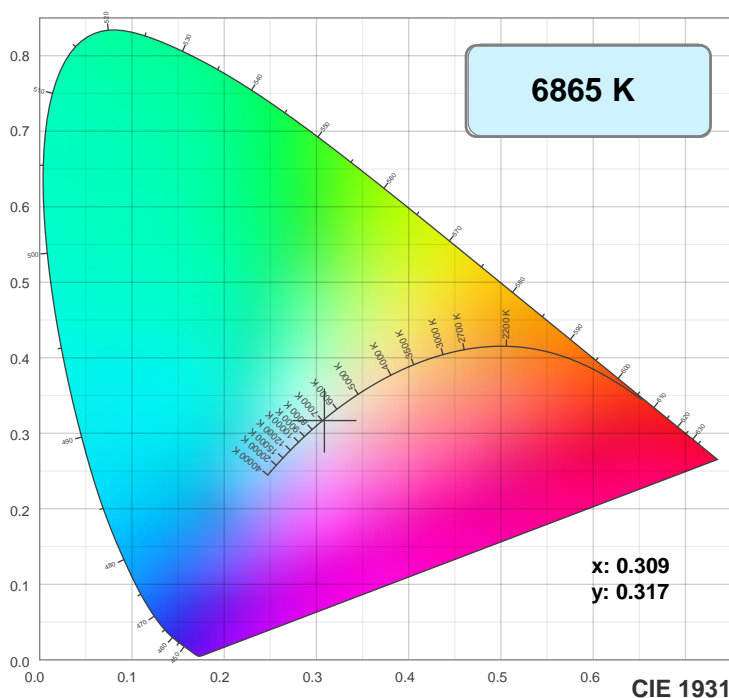
Beam Angle 50%	Field Angle 10%	Cutoff Angle 2.5%
8.8°	17.1°	21.3°

Spectra

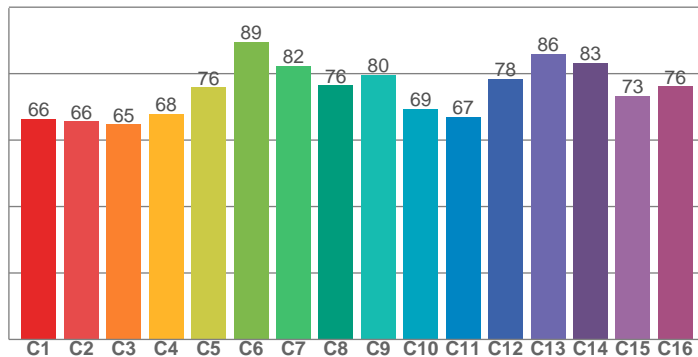
Dominant Wavelength: 360nm



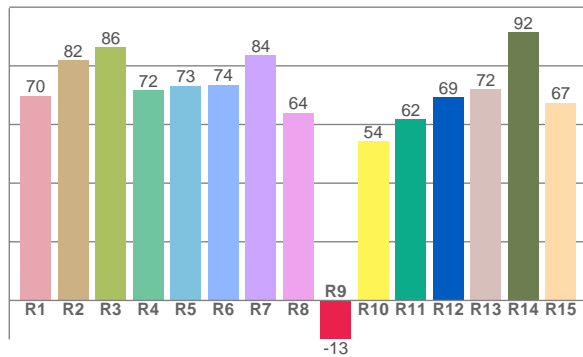
Color Details



TM30: 75.0



CRI: 75.5 (R1-R8)



CRI R values, only R1-R8 are used to calculate final CRI value

R1	R2	R3	R4	R5	R6	R7	R8	R9	R10	R11	R12	R13	R14	R15
69.8	82.0	86.2	71.7	73.3	73.6	83.7	64.0	-13.3	54.3	61.8	69.4	72.1	91.6	67.4

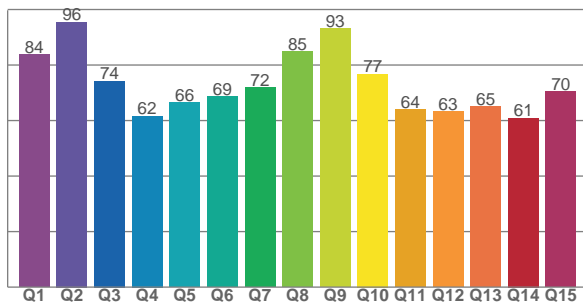
TM30 C Values, 16 binned values out of total of 99 C values

C1	C2	C3	C4	C5	C6	C7	C8	C9	C10	C11	C12	C13	C14	C15	C16
66.3	65.6	64.8	68.0	75.9	89.5	82.3	76.5	79.6	69.4	67.0	78.4	86.0	83.2	73.4	76.1

QQS Q Values

Q1	Q2	Q3	Q4	Q5	Q6	Q7	Q8	Q9	Q10	Q11	Q12	Q13	Q14	Q15
83.7	95.5	74.2	61.6	66.5	68.6	71.9	84.8	93.0	76.7	63.9	63.2	64.9	60.9	70.3

CQS: 71.2



Color Parameters

Color Temperature	Color Rendering Index	Red Component	Color Fidelity	Color Gamut	Color Quality Scale	Color Coordinate CIE 1931	Color Coordinate CIE 1931	Color Coordinate	Color Coordinate	Color Deviation from Black Body
CCT	CRI	CRI R9	TM30 Rf	TM30 Rg	CQS	x	y	u	v	Δuv
6865 K	75.5	-13.3	75.0	91.6	71.2	0.309	0.317	0.200	0.307	-0.0042

TM30 Details

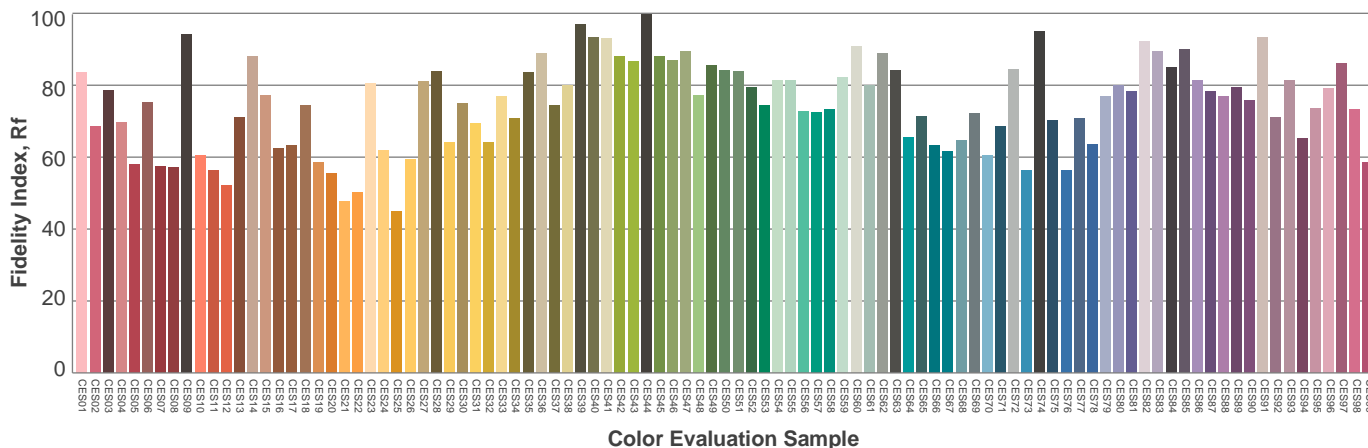
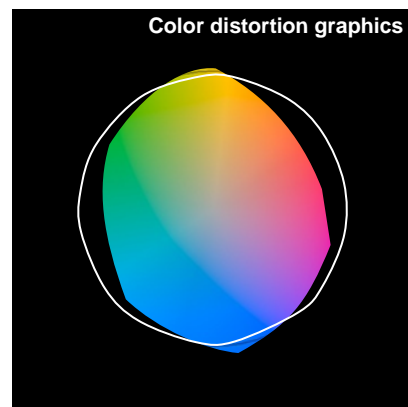
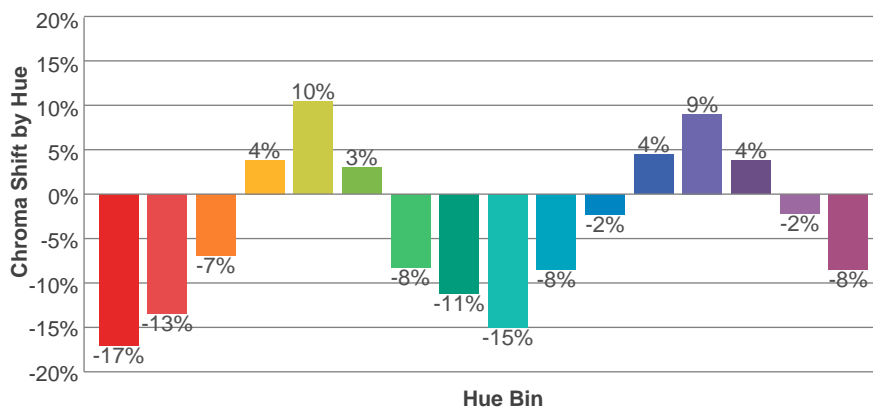
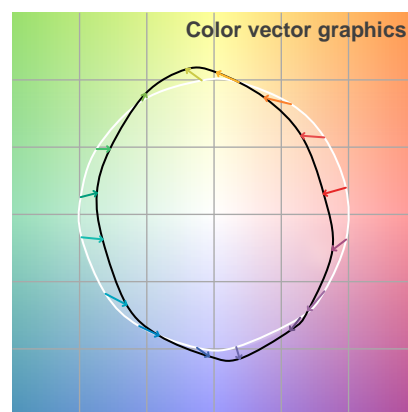
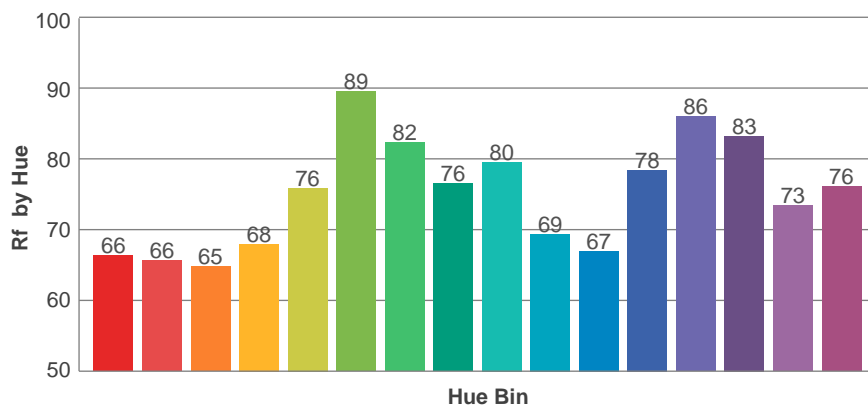
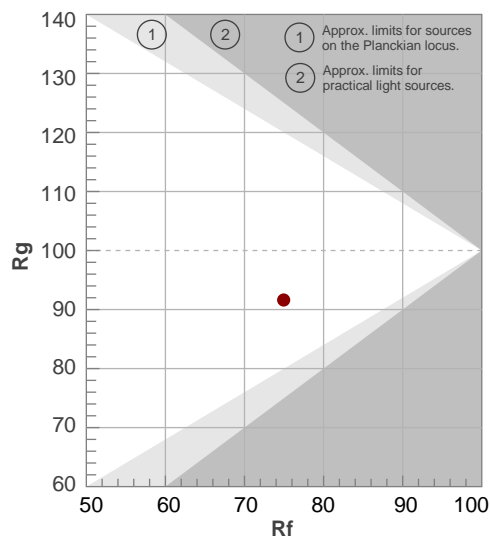
Rf 75.0

Fidelity Index Rf

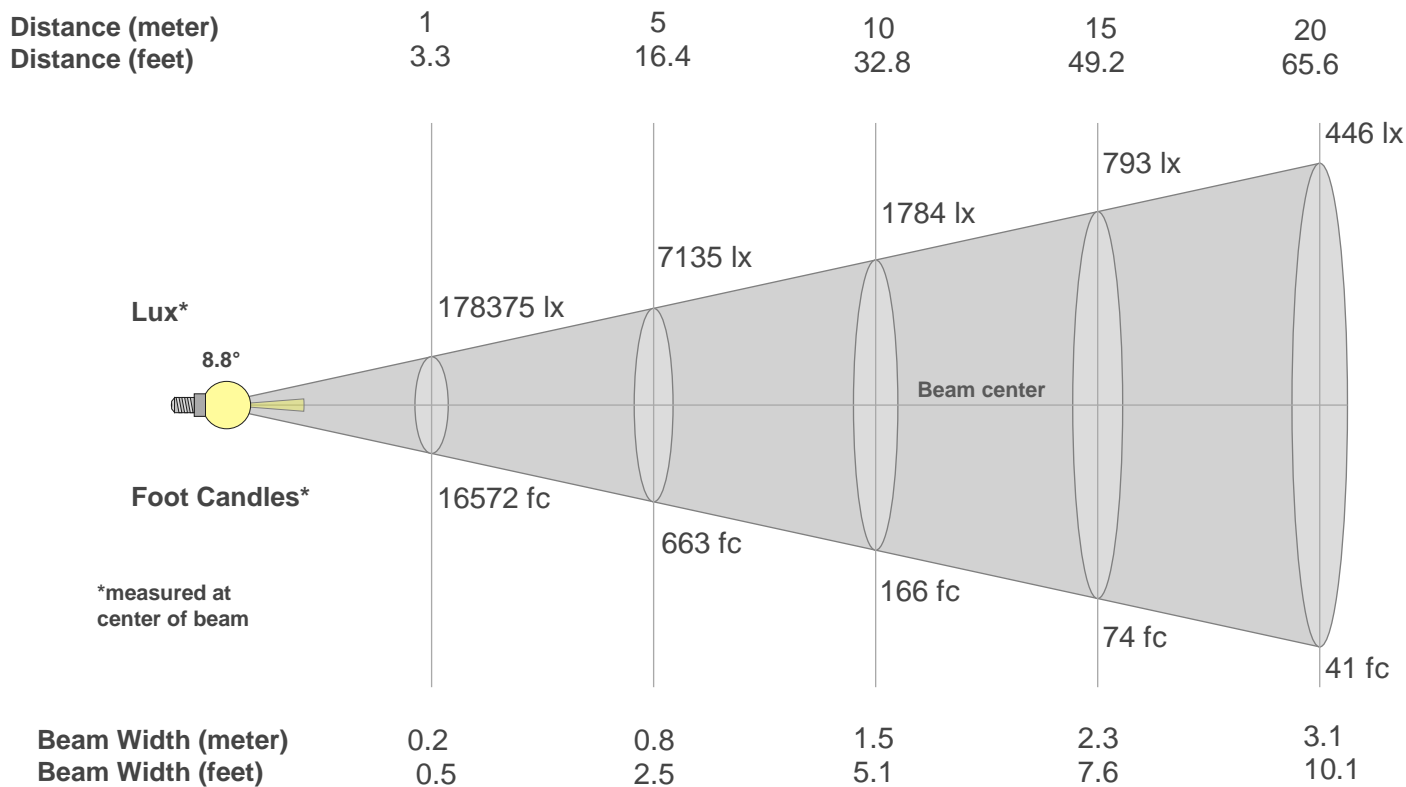
Rg 91.6

Gamut Index Rg

Hue Bin	R _f	Graphic shifts (%)	
		Chroma	Hue
1	66	-17%	-1%
2	66	-13%	11%
3	65	-7%	19%
4	68	4%	17%
5	76	10%	10%
6	89	3%	-5%
7	82	-8%	-6%
8	76	-11%	-5%
9	80	-15%	5%
10	69	-8%	15%
11	67	-2%	16%
12	78	4%	10%
13	86	9%	1%
14	83	4%	-11%
15	73	-2%	-19%
16	76	-8%	-10%



Beam Details



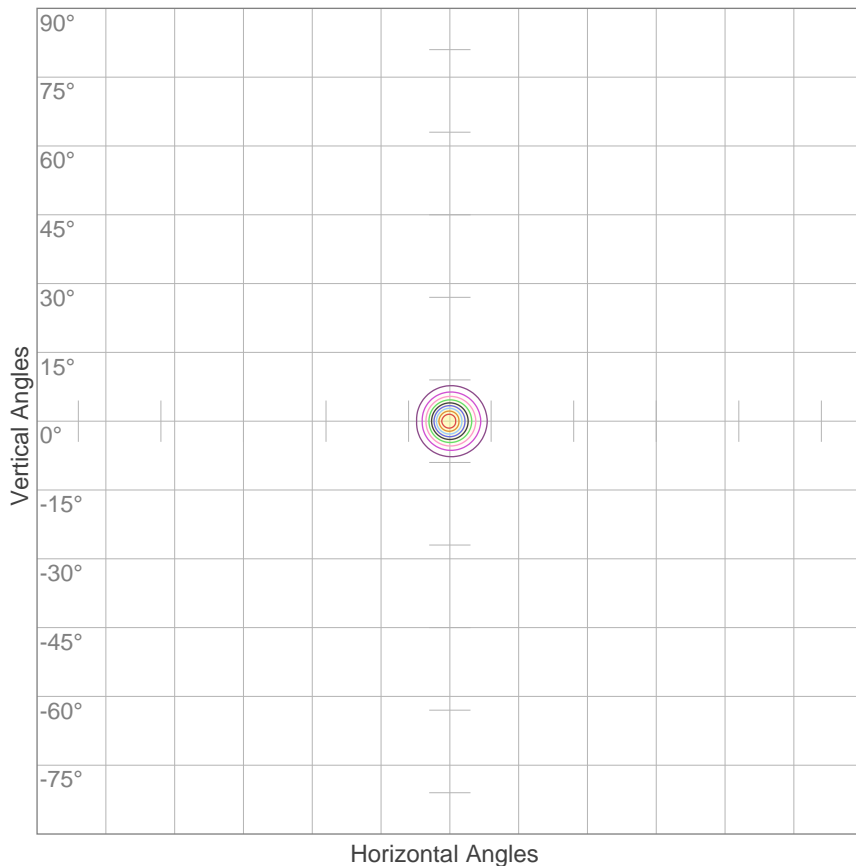
Beam Intensities from 1-20m

m	1	2	3	4	5	6	7	8	9	10	11	12	13	14	15	16	17	18	19	20
ft	3.3	6.6	9.8	13.1	16.4	19.7	23	26.2	29.5	32.8	36.1	39.4	42.7	45.9	49.2	52.5	55.8	59.1	62.3	65.6
lx	178375	44594	19819	11148	7135	4955	3640	2787	2202	1784	1474	1239	1055	910	793	697	617	551	494	446
fc	16571.6	4142.9	1841.3	1035.7	662.9	460.3	338.2	258.9	204.6	165.7	137	115.1	98.1	84.5	73.7	64.7	57.3	51.1	45.9	41.4

Beam Angle 50%	Field Angle 10%	Cutoff Angle 2,5%	Intensity Ratio in 120° Cone	Intensity Ratio in 90° Cone
8.8°	17.1°	21.3°	100.0%	100.0%

ISO Diagrams

ISO Candela Diagram



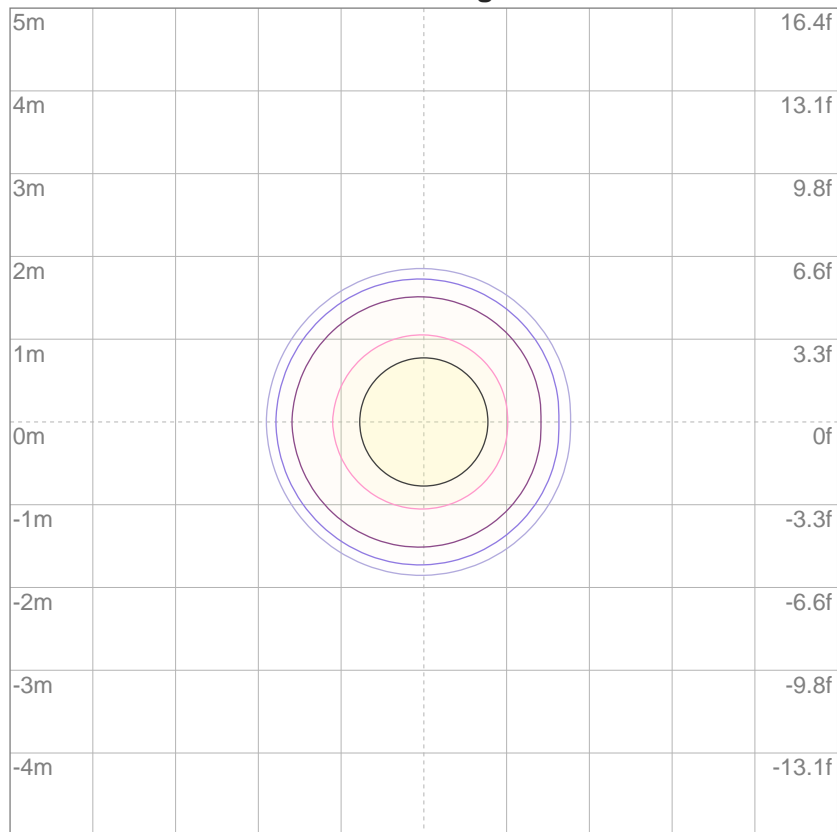
10%	17838 cd
20%	35675 cd
30%	53513 cd
40%	71350 cd
50%	89188 cd
60%	107025 cd
70%	124863 cd
80%	142700 cd
90%	160538 cd

Conditions:

Number of c-planes: 2

Candela at center: 178375 cd

ISO Lux Diagram



3%	53.5 lx
5%	89.2 lx
10%	178 lx
30%	535 lx
50%	892 lx

Conditions:

Number of c-planes: 2

Lux at center: 1784 lx

*Lux distribution on a surface
when lamp is mounted at 10
meters from the surface.*

Mounting Height: 10 meters (33 feet)